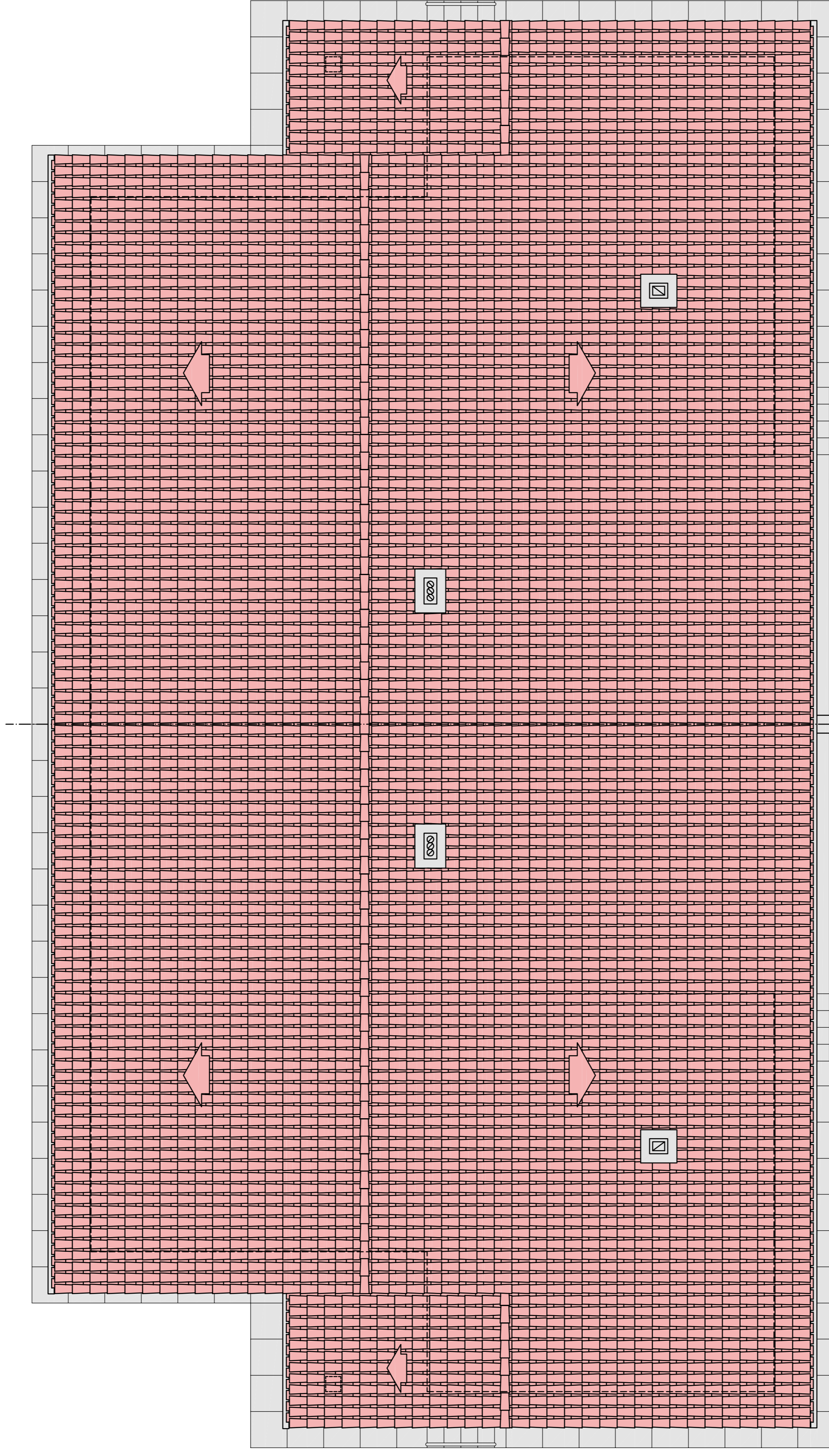


vivienda "A"

| | |
|-----------------------|-------------------------|
| superficie construida | 120.76 m ² . |
| porches | 26.47 m ² . |
| vivienda | 94.29 m ² . |
| superficie util | 102.79 m ² . |
| porches | 25.66 m ² . |
| vivienda | 77.13 m ² . |

vivienda "B"

| | |
|-----------------------|-------------------------|
| superficie construida | 120.76 m ² . |
| porches | 26.47 m ² . |
| vivienda | 94.29 m ² . |
| superficie util | 102.79 m ² . |
| porches | 25.66 m ² . |
| vivienda | 77.13 m ² . |



PLANTA BAJA

PLANTA de CUBIERTAS